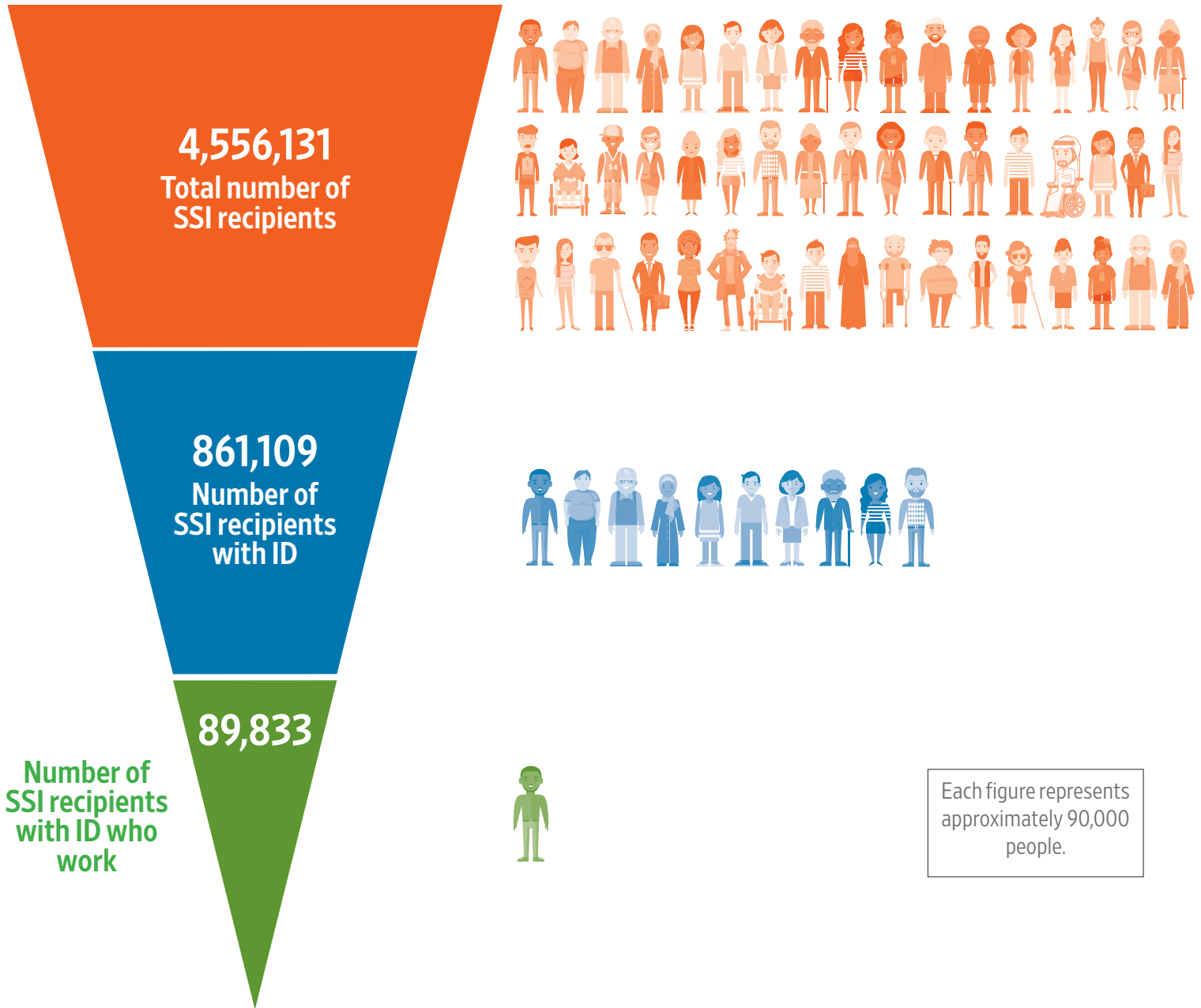
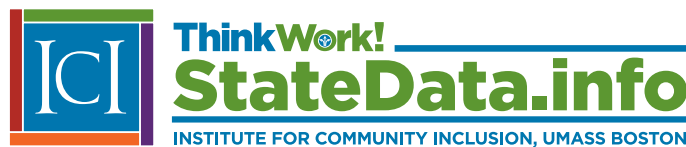


SSI* Beneficiaries with Intellectual Disabilities are Unlikely to Work



* Supplemental Security Income

Data Source: Social Security Administration (2020)



This graphic is a product of StateData, a project of ThinkWork! at the Institute for Community Inclusion, University of Massachusetts Boston, supported in part by the Administration on Intellectual and Developmental Disabilities, Administration for Community Living, US Department of Health and Human Services, under cooperative agreement #90DNPA0002. The opinions contained herein are those of the grantee and do not necessarily reflect those of the funders.

Social Security Administration. (2020). SSI Annual Statistical Report, 2020.

Retrieved from www.ssa.gov/policy/docs/statcomps/ssi_asr/